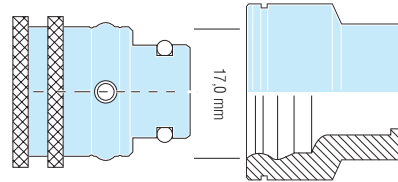
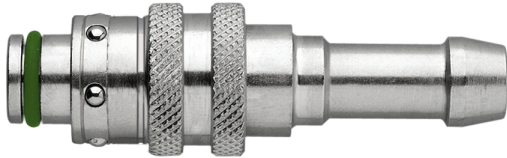
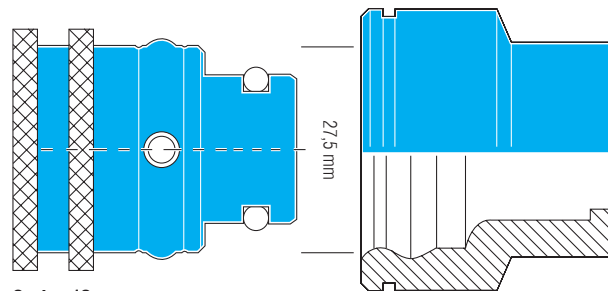


FRENCH SERIES

Nominal Diameter
08 / 12

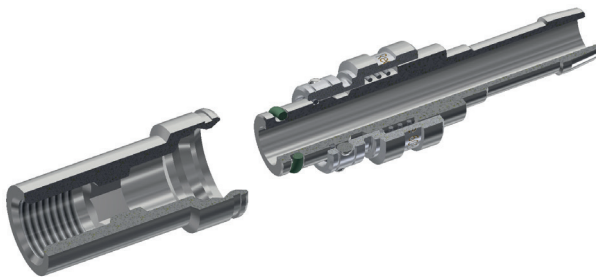


Series 08



Series 12

Illustration scale 1:1



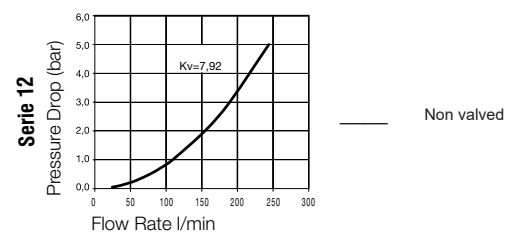
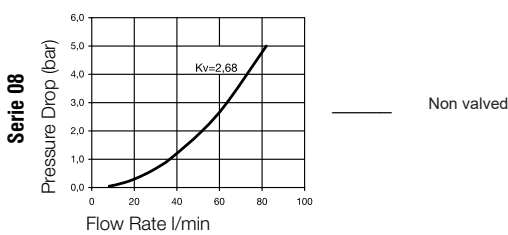
TECHNICAL DESCRIPTION

Coupling series especially developed for connecting coolant lines on injection moulds.

Fully interchangeable with other brands with same plug profiles.

All dimensions and tolerances are made according to original specs.

CHART



MATERIAL

Coupling		Plug	
Body	Brass, Nickel Plated	Plug	Brass, Nickel Plated
Locking Balls	AISI 420		
Spring	AISI 301		
Seal	FKM		

WORKING PRESSURE

15 bar, maximum static working pressure with safety factor of 4 to 1.

WORKING TEMPERATURE

Water -15°C up to +140°C
Oil -15°C up to +180°C