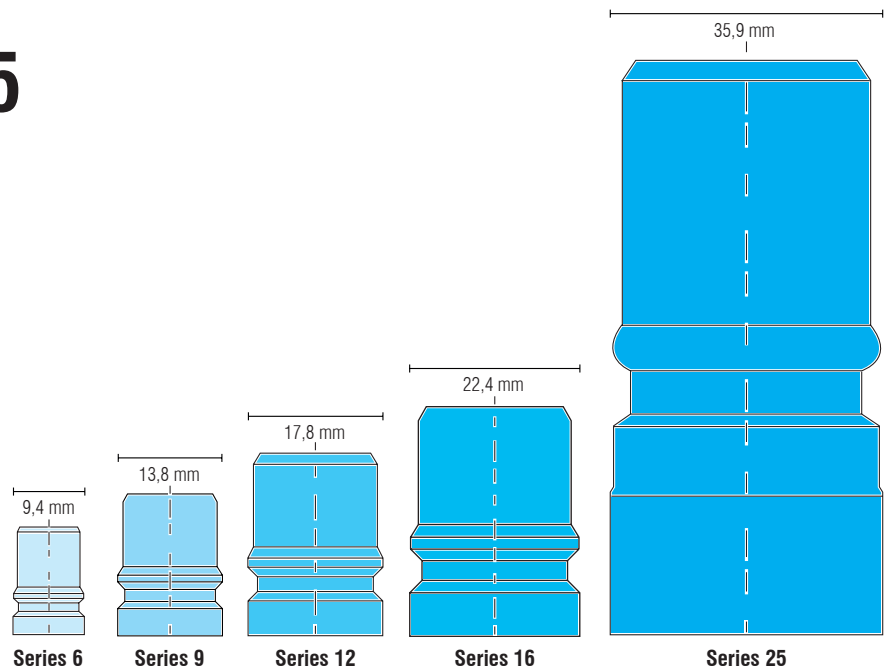
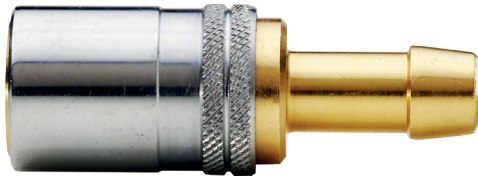


FRENCH MATIC SERIES

Nominal Diameter

6 / 9 / 12 / 16 / 25



Series 6

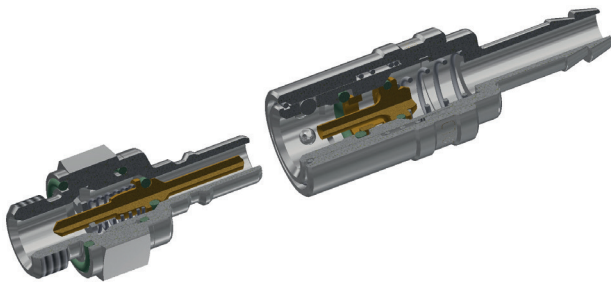
Series 9

Series 12

Series 16

Series 25

Illustration scale 1:1



TECHNICAL DESCRIPTION

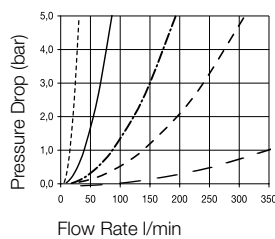
Coupling series especially developed for connecting coolant lines on injection moulds.

Fully interchangeable with other brands with same plug profiles.

All dimensions and tolerances are made according to original specs.

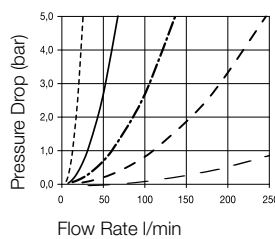
CHART

Single Shut-Off



Series 25
K_v=28,3
Series 16
K_v=9,62
Series 12
K_v=6,12
Series 9
K_v=2,59
Series 6
K_v=0,83

Double Shut-Off



Series 25
K_v=26
Series 16
K_v=8,99
Series 12
K_v=4,34
Series 9
K_v=1,98
Series 6
K_v=0,76

MATERIAL

Coupling

Body	Brass, Nickel Plated
Locking Balls	AISI 420
Spring	AISI 301
Seal	FKM

Plug

Plug Profile	Series 6/9/12 Brass, Nickel Plated	Series 16/25 Steel, Zinc Plated
Back Body	Brass, Nickel Plated	Brass, Nickel Plated
Valve	Brass	Brass
Spring	AISI 301	AISI 301
Seal	FKM	FKM

WORKING PRESSURE

15 bar, maximum static working pressure with safety factor of 4 to 1.

WORKING TEMPERATURE

Water -15°C up to +140°C