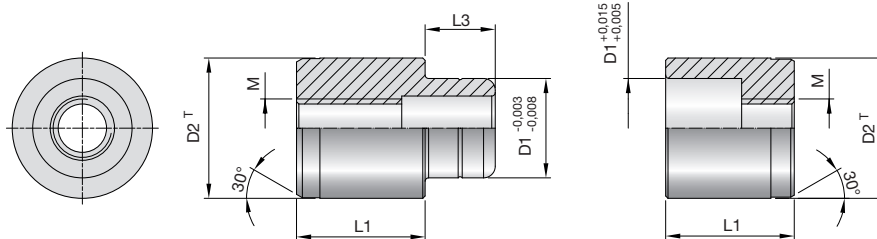


1

Zentriereinheiten

Centring elements

Unités de centrage



Z60-

Mat.: ST
58+2HRC

Z60-D2



* nicht im Lieferumfang enthalten
not included in the extent of delivery
non compris dans le volume de livraison

| D2 | T | D1 | L1 | L2 | L3 | M |
|----|---------------|-----|----|----|-----|----|
| 8 | +0,01/+0,02 | 6 | 9 | 19 | 4 | M4 |
| 10 | +0,01/+0,02 | 7 | 10 | 21 | 5,5 | M4 |
| 12 | +0,01/+0,02 | 8,5 | 11 | 23 | 6 | M5 |
| 14 | +0,015/+0,025 | 10 | 13 | 27 | 7 | M6 |
| 16 | +0,015/+0,025 | 11 | 15 | 31 | 9 | M6 |
| 18 | +0,015/+0,025 | 12 | 17 | 35 | 10 | M6 |
| 20 | +0,015/+0,025 | 13 | 19 | 39 | 11 | M6 |

